

Discover the Red Sea Riviera



The Best Brexit Solution
Under the Sun



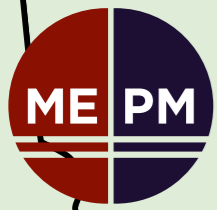
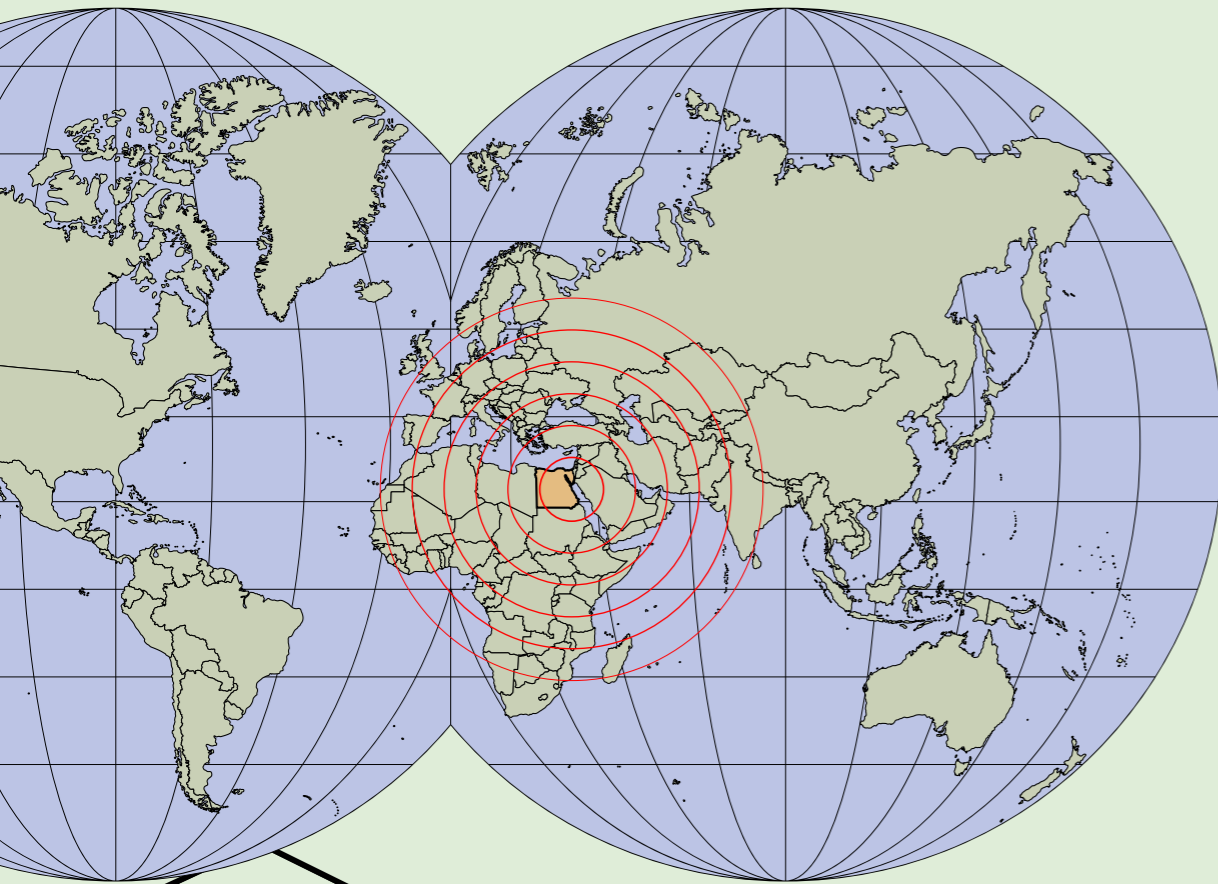
365 Days of Sunshine

Luxury living in the sunshine with a low cost of living in a safe and secure environment. Enjoy a Champagne lifestyle on a lemonade budget.



Accessible Location

Just over 4 hours flight from Europe with variety of carriers including Easyjet, Thomson, Thomas Cook, Turkish Airlines, Egypt Air.



Favourable Tax Environment

With limited taxation on foreign property ownership, buying a home on the Red Sea makes sense. No purchase taxes, no resale taxes.





SOMABAY
OUTSTANDING BY NATURE

Somabay is a ten million square meter resort peninsula on Egypt's Red Sea Coast, designed to celebrate the best elements of the sun and the sea. This self-contained resort paradise is encompassed by endless sandy beaches to the South and magical coral reefs to the North. Somabay hosts pure natural landscapes accented by its diverse resort hotels, residential properties, golf course, thalasso spa, and water sports centers.

Somabay Resort Plan



SOMABAY
OUTSTANDING BY NATURE

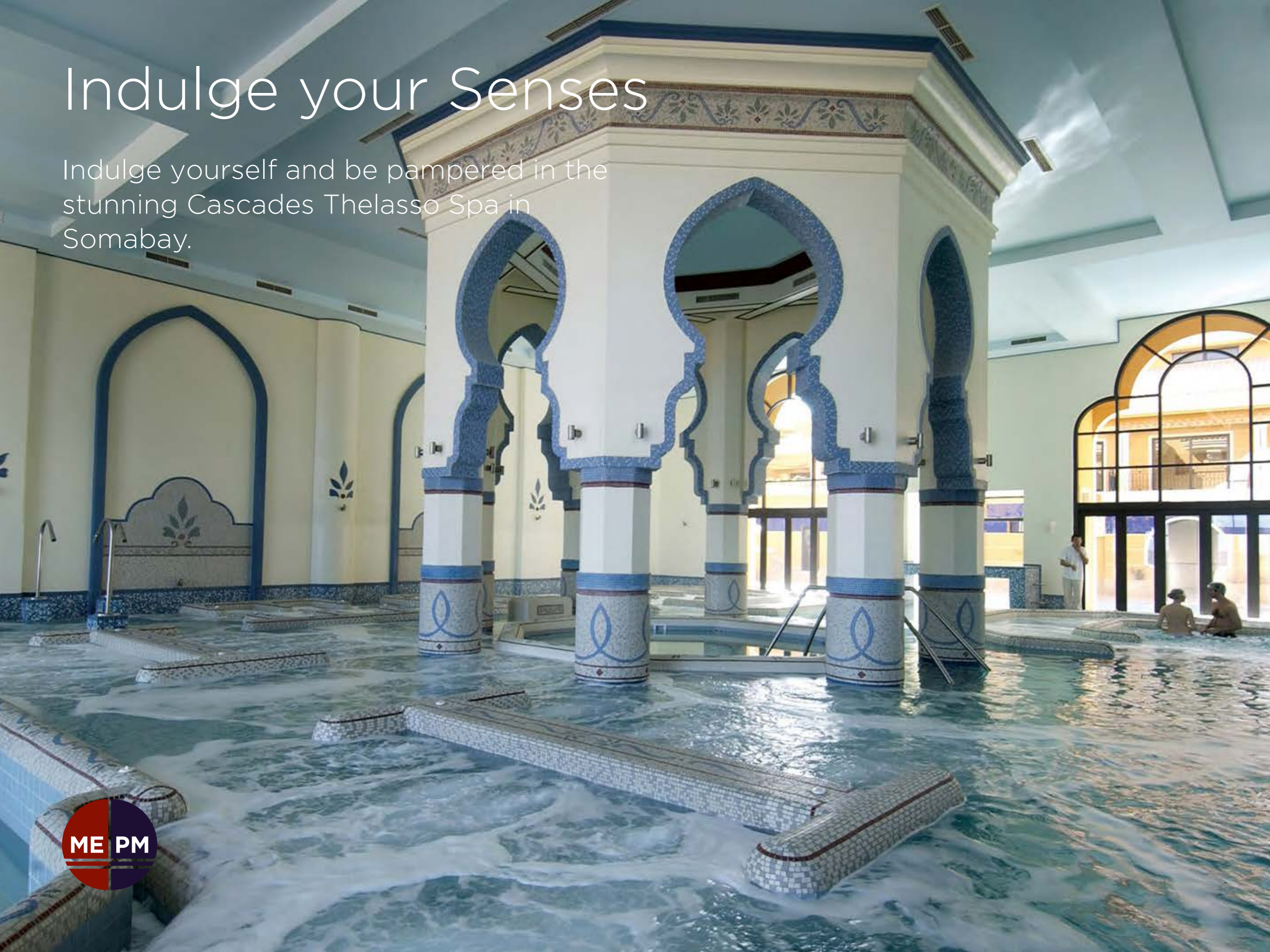
Golfers Paradise

Golf to a championship standard overlooking the Red Sea at the 18-hole Cascades golf course designed by Gary Player.



Indulge your Senses

Indulge yourself and be pampered in the stunning Cascades Thelasso Spa in Somabay.



Taste Exhiliration

Select from the wide variety of watersports on offer at Somabay from kiting to diving and much more.





Soma Bay Property Development Phases

ABUSOMA REEF

Abusoma Reef welcomes you home with endless views of the horizon and the relaxing sounds of the waves breaking on the reef. Located on the northeast coastline of Somabay, Abusoma Reef offers various architectural designs; the stylish two to five bedroom layouts all feature terraces overlooking the crystal clear sea waters.



Abu Soma Reef



PLOT 401
TYPE 1B

PLOT 402
TYPE 1B

PLOT 403
TYPE 1B

PLOT 404
TYPE 1B

PLOT 405
TYPE 1B

PLOT 406
TYPE 1B

PLOT 407
TYPE 1B

PLOT 408
TYPE 1B

PLOT 409
TYPE 1B

PLOT 418
TYPE 3

PLOT 417
TYPE 3

PLOT 416
TYPE 3

PLOT 415
TYPE 3

PLOT 414
TYPE 3

PLOT 413
TYPE 3

PLOT 412
TYPE 3

PLOT 411
TYPE 3

PLOT 410
TYPE 3



Abu Soma Reef Villas

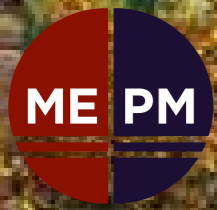
Enter your very own sanctuary in Abusoma Reef's one-of-a-kind contemporary villas and indulge in the luxury of waking up just a few meters away from the sea. Truly redefining exclusive comfort with your very own pool overlooking Somabay's crystal blue coastline. These first row villas feature three-bedrooms with pristine finishing standards equally as beautiful as your homes' surroundings setting a new standard for a summer home.



Abu Soma Reef Villas



Abu Soma Reef Villas



Abu Soma Reef Villas



Four Bedroom Villa

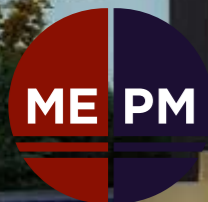
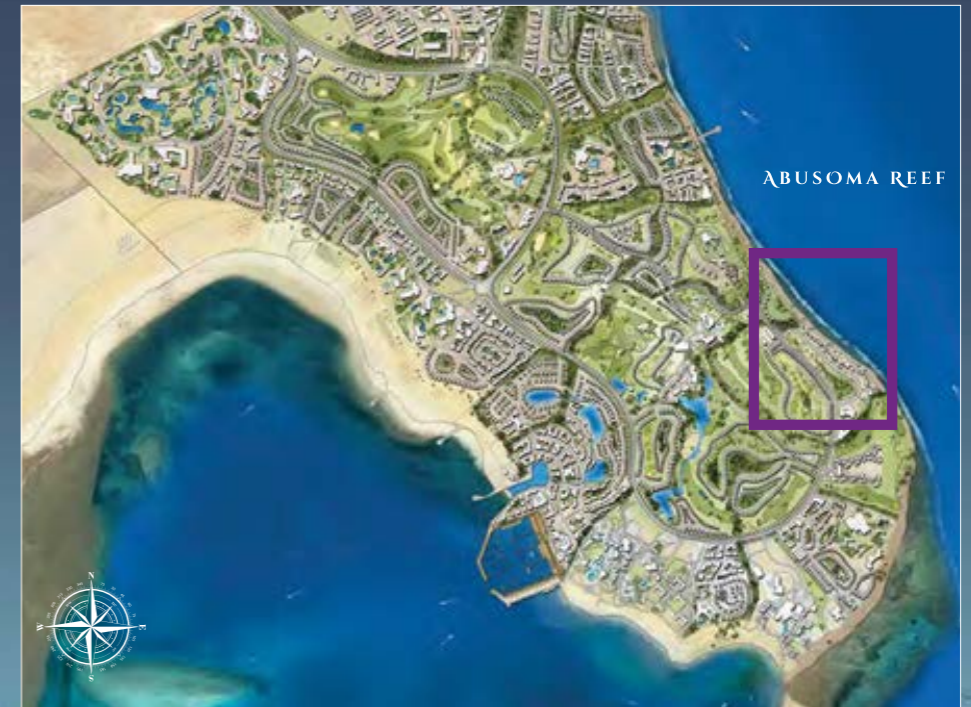
Indoor Area: 209.00 m²

Outdoor Area: 41.00 m²

Sizes are subject to adjustment. Swimming pools & guard rooms are not included. Interiors are upgrades.

Abu Soma Reef Terrace Villas

Step into a world where state-of-the-art design is nestled among some of the most pristine coasts nature has to offer. Designed keeping the flow of positive energy in mind, all units make the most of space and offer airy and well lit rooms that enjoy natural sunlight all year round. Covering an area of 300 m², Terrace Villas feature three bedrooms homes and offer breathtaking views of the Red Sea's clear waters.



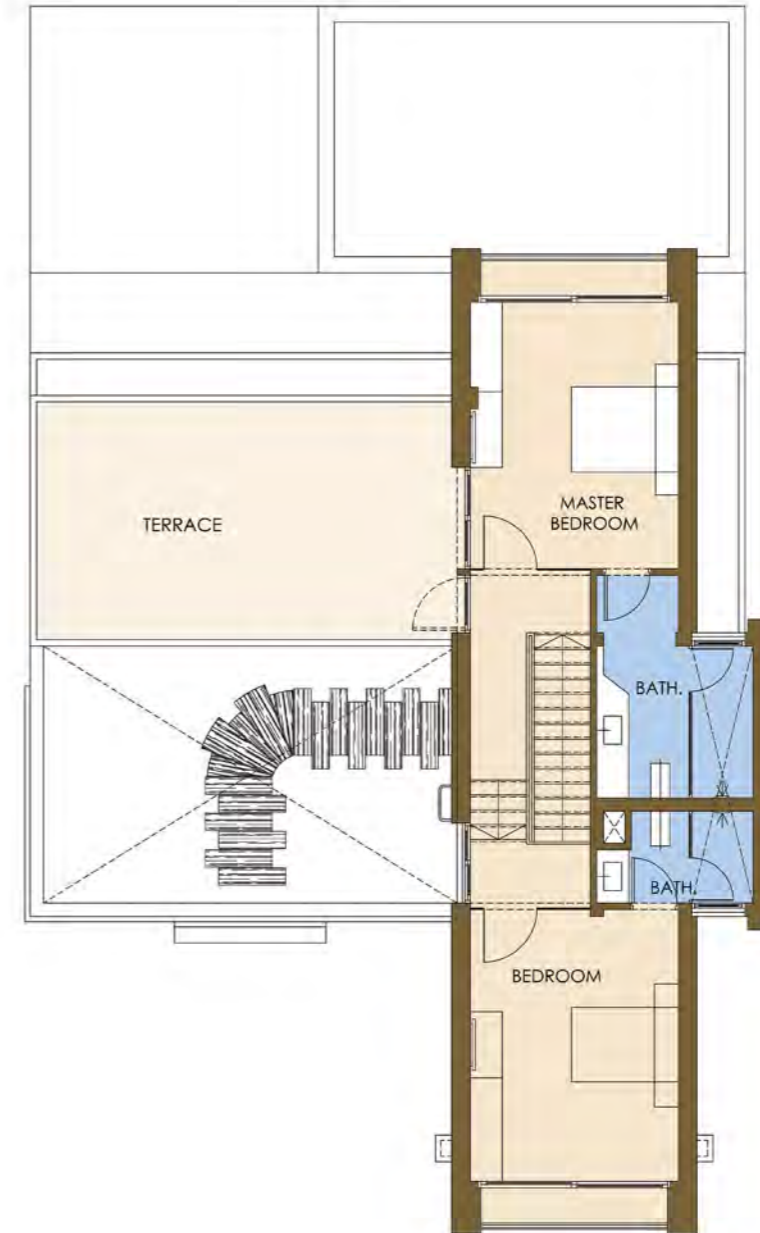
Abu Soma Reef Terrace Villas



Abu Soma Reef Terrace Villas



Abu Soma Reef Terrace Villas



Three Bedroom Terrace Villa

Indoor Area: 211.00 m²

Outdoor Area: 89.00 m²

Sizes are subject to adjustment. Swimming pools & guard rooms are not included. Interiors are upgrades.



BAYWEST

Located on Somabay's west coast, Baywest is the perfect idyllic residential project. Renowned for its soothing architecture, picturesque surroundings and tranquil sea which guarantees an impeccable stress free environment for you and your family.



Baywest



Baywest



Baywest



Baywest (2 Bed Villa)



Baywest (2 Bed Villa)



Two Bed Villa

Build Area: 122.00 m²

Land Area: 344.00 m²

Sizes are subject to adjustment. Swimming pools & guard rooms are not included. Interiors are upgrades.

Baywest (3 Bed Villa)



Baywest (3 Bed Villa)



Three Bed Villa

Build Area: 158.00 m²

Land Area: 370.00 m²

Sizes are subject to adjustment. Swimming pools & guard rooms are not included. Interiors are upgrades.

S O M A

B R E

E Z E

Ideally located on the sea, Soma Breeze Apartments spoil their homeowners with uninterrupted views of the beautiful crystal clear blue waters. In addition to being the closest residential project to the sea, a couple of minutes drive is what separates its residents from all main attractions in Somabay. By choosing a home in Soma Breeze, you are choosing a home with an unparalleled location.



Soma Breeze



Soma Breeze



Soma Breeze



Soma Breeze



Soma Breeze



Building 4A



Soma Breeze Building 4A

- Type A3
- Type F2A
- Type F2B



Basement Floor

Soma Breeze Building 4A

- Type A3
- Type F2A
- Type F2B



Ground Floor

Sizes are subject to adjustment. Swimming pools & guard rooms are not included. Interiors are upgrades.

Soma Breeze Building 4A



First Floor

Sizes are subject to adjustment. Swimming pools & guard rooms are not included. Interiors are upgrades.

Soma Breeze Building 4A



Second Floor

Sizes are subject to adjustment. Swimming pools & guard rooms are not included. Interiors are upgrades.

Soma Breeze



Building 3B



Soma Breeze Building 3B

- Type A3
- Type F2A
- Type F2B



Ground Floor

Sizes are subject to adjustment. Swimming pools & guard rooms are not included. Interiors are upgrades.

Soma Breeze Building 3B

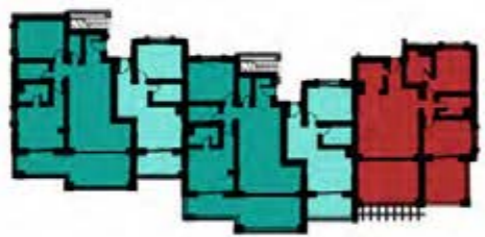


First Floor

Sizes are subject to adjustment. Swimming pools & guard rooms are not included. Interiors are upgrades.

Soma Breeze Building 3B

- Type B2
- Type C1
- Type C2



Second Floor

Sizes are subject to adjustment. Swimming pools & guard rooms are not included. Interiors are upgrades.

Soma Breeze Building 3B



Third Floor

Sizes are subject to adjustment. Swimming pools & guard rooms are not included. Interiors are upgrades.

WADI JEBAL

Set atop the beautiful cliffs of the peninsula, Wadi Jebal is Somabay's latest gem: a residential project with unmatched views of the Red Sea's crystal clear waters. Making the most of the natural topography, it rewards all its units' owners with incredible views of the sea.

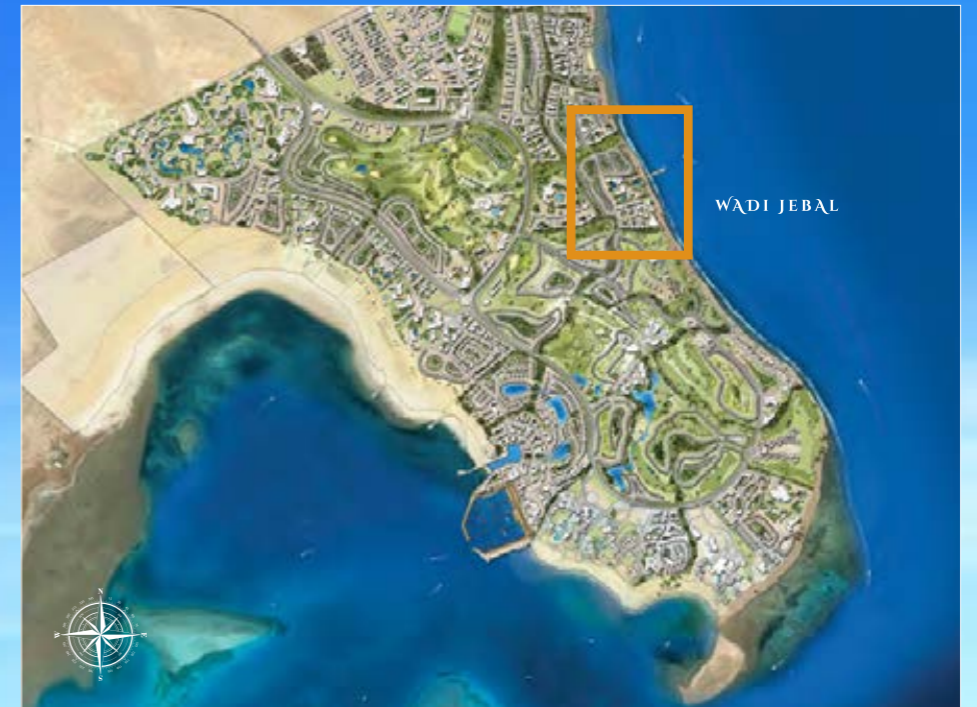


Wadi Jebel



Wadi Jebel

Built on only 15% of the cliff, Wadi Jebel offers its homes ample surrounding open spaces and privacy, bringing all that matters most in one place: beautiful homes in an picturesque setting.



Wadi Jebel Villas

Enter your very own sanctuary in Wadi Jebel's one-of-a-kind contemporary villas and indulge in the luxury of waking up just a few meters away from the sea. Truly redefining exclusive comfort with your very own pool overlooking Sombay's crystal blue coastline. These first row villas feature three to four bedrooms with pristine finishing standards equally as beautiful as your homes' surroundings setting a new standard for a summer home.



Wadi Jebel Villas



Wadi Jebel Villas



ME PM

Wadi Jebel Villas



Three Bedroom Villa

Indoor Area: 185.18 m²

Outdoor Area: 41.00 m²

Sizes are subject to adjustment. Swimming pools & guard rooms are not included. Interiors are upgrades.

Wadi Jebel Lodges

Beautifully ensconced on the higher parts of the cliff, The Lodges spoil their homeowners with the luxury of standalone homes and the convenience of smaller spaces. Ideal for young couples and smaller families, units are 148.50 m² spread on two levels. Featuring two bedrooms and a terrace, the Lodges are truly quintessential holiday homes.



Wadi Jebel Lodges



Wadi Jebel Lodges



Wadi Jebel Lodges



FIRST FLOOR



GROUND FLOOR



Two Bedroom Villa: Type 5A

Indoor Area: 122.50 m²

Outdoor Area: 26.00 m²

Sizes are subject to adjustment. Swimming pools & guard rooms are not included. Interiors are upgrades.

Wadi Jebel Lodges



Two Bedroom Villa: Type 5B

Indoor Area: 118.00 m²

Outdoor Area: 24.00 m²

Sizes are subject to adjustment. Swimming pools & guard rooms are not included. Interiors are upgrades.

Wadi Jebel Lodges



Two Bedroom Villa: Type 5C

Indoor Area: 122.50 m²

Outdoor Area: 26.00 m²

Sizes are subject to adjustment. Swimming pools & guard rooms are not included. Interiors are upgrades.

Wadi Jebel Patio Villas

From its glass, modern architectural style to the comfort of having your very own three bedroom summer home all on one floor, this Patio Villa exceeds your summer home criteria. Complete sea view from all rooms across the house grants unprecedented views at a glance of an eye.



Wadi Jebel Patio Villas



Wadi Jebel Patio Villas



Wadi Jebel Lodges



Three Bedroom Villa: Type 7

Indoor Area: 133.00 m²

Outdoor Area: 25.00 m²

Sizes are subject to adjustment. Swimming pools & guard rooms are not included. Interiors are upgrades.